

WHY WAIT IF YOU CAN FOLLOW YOUR RUGBY DREAM **NOW?**

16 YEARS OLD AND READY TO ENTER A HIGH PERFORMANCE RUGBY PROGRAM AND COMPLETE FANTASTIC BORDERLESS SCHOOLING ONLINE?

praxis
BORDERLESS LEARNING

in association with

UXI RUGBY
SPORT INSTITUTES



W.P. RUGBY
ACADEMY



 **praxis**
BORDERLESS LEARNING

HIGH PERFORMANCE ACADEMIC SUPPORT PROGRAMME

Live life differently, become the best you are.
Praxis Online Private Schooling

About the High Performance Support Programme

This unit aims to recruit and produce winners in sports and to facilitate the academic success of student athletes through the athlete support programme.

The High Performance Support Programme helps with the challenges of balancing study and elite sport or performance commitments and activities. The programme combines the Praxis Online Schools, assessment, and preparation through the world class IEB national examinations with the support needed to achieve world class performance. The creation of a 'performance lifestyle' contributes to an outstanding student performer experience. The additional focus on personal and career development ensures that student-performers are equipped for a lifetime of growth and success.

FET Phase

Suitable for ages 15 to 18

Offers will be made to Grade 10 and Grade 11 2022 applications

We offer the Enhanced National Curriculum in preparation of the IEB examination.

Accreditation

Praxis is proudly registered with the Independent Examinations Board (IEB), which is accredited by Umalusi, and known for its high educational standards and outstanding commitment to quality assessment. We employ qualified and experienced teachers who are registered with the South African Council of Educators (SACE). These aspects enable learners to be assured of quality assessment in accordance with policy.



Why High Performance Support programme?



ATTENDANCE AND ASSESSMENT FLEXIBILITY

Mornings are focussed on high performance sports programmes for optimum performances and outcomes. The academic High School programme will be completed in a structured timetable during the afternoon, Mondays to Thursdays between 14:00 to 16:30.

Each student has a nominated facilitator, who works closely with the programme, its members, and coaches to ensure course requirements are met when alternative arrangements and renegotiated timeframes are required.

Flexible study assistance is available to all members of the High Performance Support Programme in accord with the performance requirements. Members should contact appropriate facilitator in a timely manner when flexible study arrangements are needed.

All benefits of private teaching and assistance is built into the programme to optimize academic achievement.



ALTERNATE EXAM ARRANGEMENTS

Programme members are able to apply for alternate exam times and/or locations when required. Specific criteria are set by the examinations office and must be met.



ACADEMIC AND CAREER SUPPORT

Tailored support alongside a high performance programme to assist with tertiary/post matric planning and part time study arrangements.

UNIVERSITY GUIDANCE AND ASSISTANCE

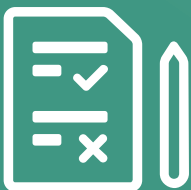
University Guidance sessions are arranged with students and parents to ensure successful applications to their chosen degree programmes. Our subject/course advice is given in plan of their future career and recommendations are implemented from Management to ensure options for future tertiary study.



Courses Available:



- Accounting
- Afrikaans First Additional Language
- Business Studies
- Computer Applications Technology
- Economics
- English Home Language
- Geography
- Life Orientation
- Life Sciences
- Mathematical Literacy
- Mathematics Core
- Physical Sciences
- Tourism



Assessments

Formative and summative assessments with full evaluation of each student's progress is reported on academic records. Portfolio of Evidence is done in accordance to the national assessment policies.

Start your application:

STEP 1

Complete our placement request form below.



STEP 2

Submit your completed placement form along with all supporting documents.

- Latest school results.
- Student birth certificate.

Note: Supporting documents must be uploaded with your placement request form.



STEP 3

Placement request forms will be assessed.

Note: Online assessment will be required should a student not have formal school results from an accredited school.



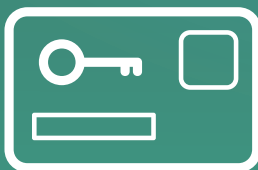
STEP 4

If successful, parents will receive via email, an acceptance letter and invoice for a once-off non-refundable registration fee.



STEP 5

Receive your welcome pack and access card once the registration fee is paid and all admission forms are completed.



STEP 6

Register online for classes and parent communication.



See our website to access your application to the High Performance Support Programme

<https://praxisschools.com/UXIsport/>

HOW TO APPLY FOR THE HIGH PERFORMANCE SUPPORT PROGRAMME

Applications must be submitted and will be selected in accordance selection criteria. Applications are completed online.

<https://praxisschools.com/UXisport>

HIGH PERFORMANCE SUPPORT FUND

Academic support fund is available to UXi Sports member only. These prices will only be available to enrolled UXi sports students.

Support funds will cover UXi sports students during down times in cases of serious injury or a prolonged recovery period. Academic programmes can continue during these times from anywhere in South Africa.

Grade 9 to 12
R 1 950.00
per month (over 10 months)

Included in the fees;

- All lessons are live with a structured timetable,
- Full interaction with subject teachers and facilitators.
- Afternoon revision lessons uploaded and available.
- Termly academic records are issued to each student.
- Access to and utilisation of the Mindspark programme.
- All required education software licences.
- Microsoft office 365, which includes MS Word,
- PowerPoint, Excel, Teams and Outlook.

Excluding: textbooks, stationery and exam costs





praxis
BORDERLESS LEARNING

in association with
**UXI RUGBY
SPORT INSTITUTES**

Tel: 011 660 7584
Email: info@praxisonline.co.za
www.praxischools.com



W.P. RUGBY
ACADEMY

